

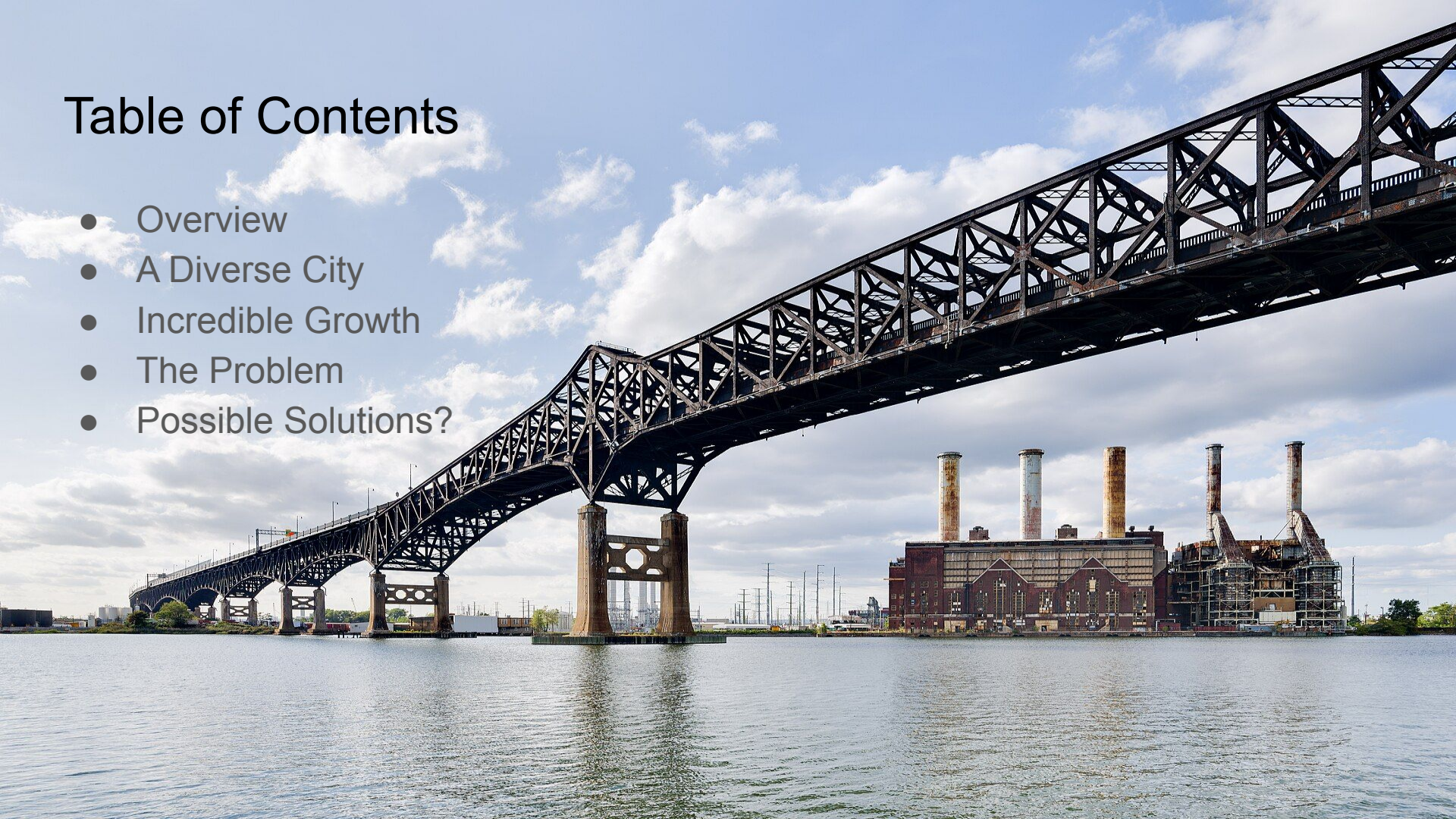
Jersey City's Housing Crisis



Isaac Rosenberg
Intro to GIS
4.8.25

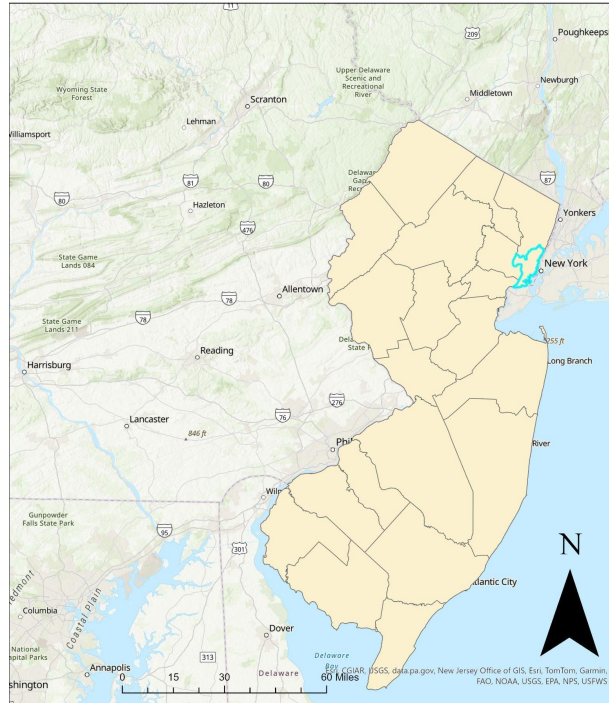
Table of Contents

- Overview
- A Diverse City
- Incredible Growth
- The Problem
- Possible Solutions?



Location

Hudson County, NJ



Jersey City, NJ



Jersey City is located along the Hudson River, directly across from New York City.

Jersey City is the second densest city in the State of New Jersey.

Major transportation options includes the PATH trains, one of the busiest transit systems in the country, providing direct access to New York City.

Jersey City, NJ Orthophotos



Liberty State Park



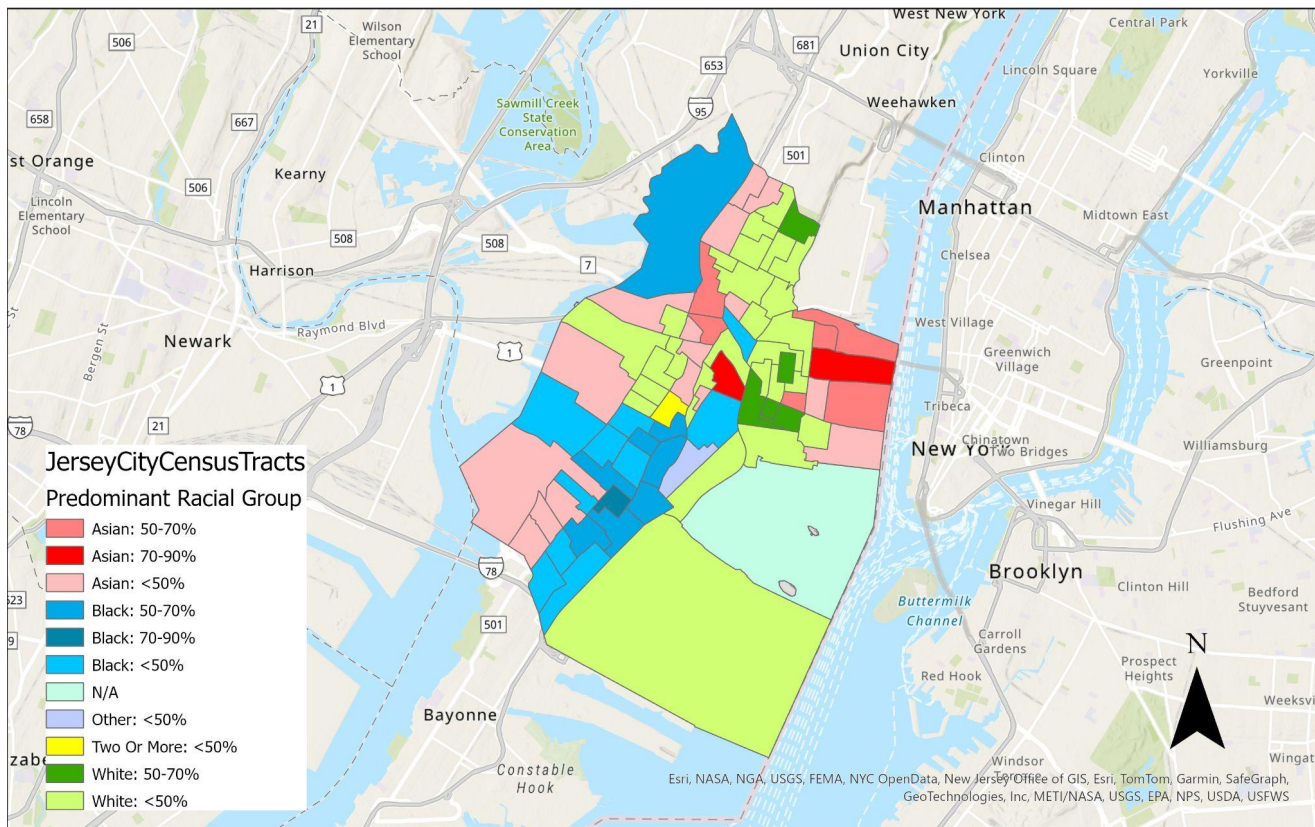
Jersey City is also home to Liberty State Park, which provides striking views of the Statue of Liberty and New York City.



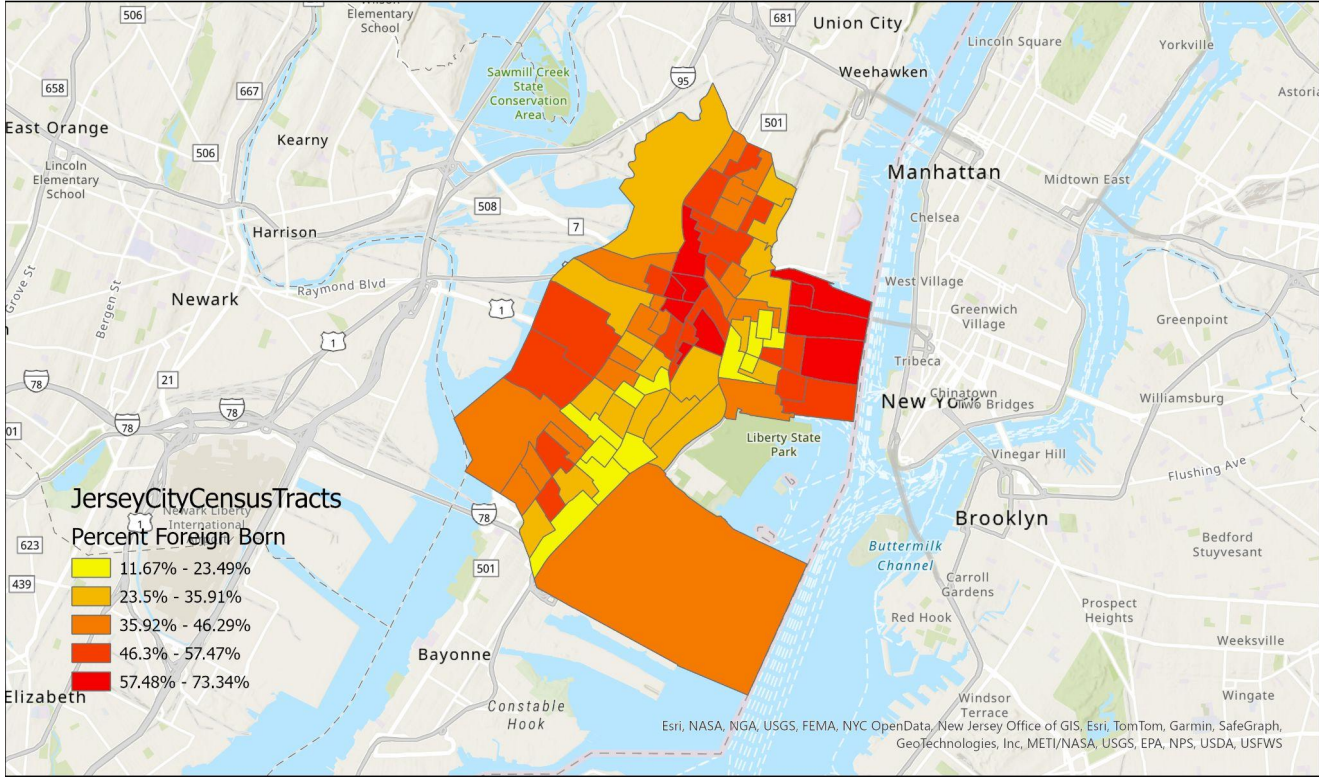
Diversity

- Ranked the second most diverse city in the United States, according to WalletHub.

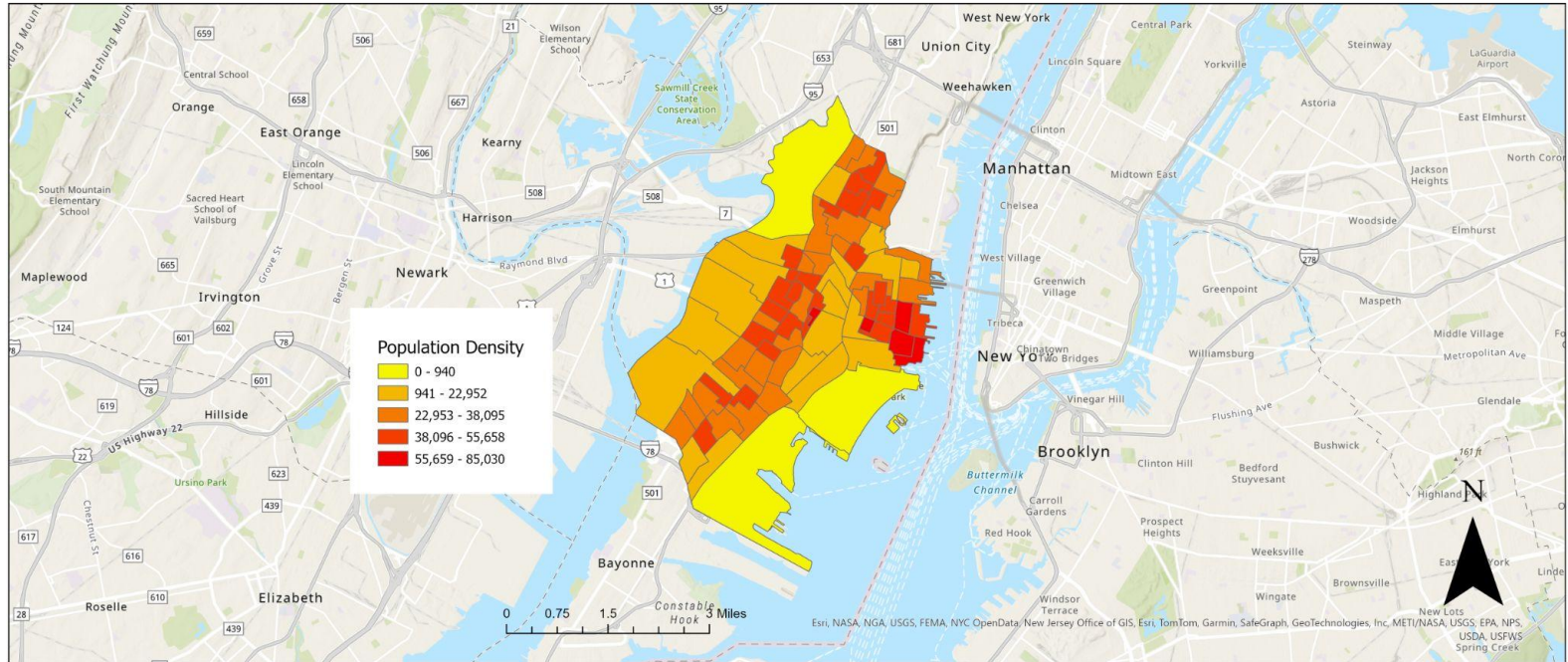
Jersey City Racial Diversity



Jersey City Percent Foreign Born

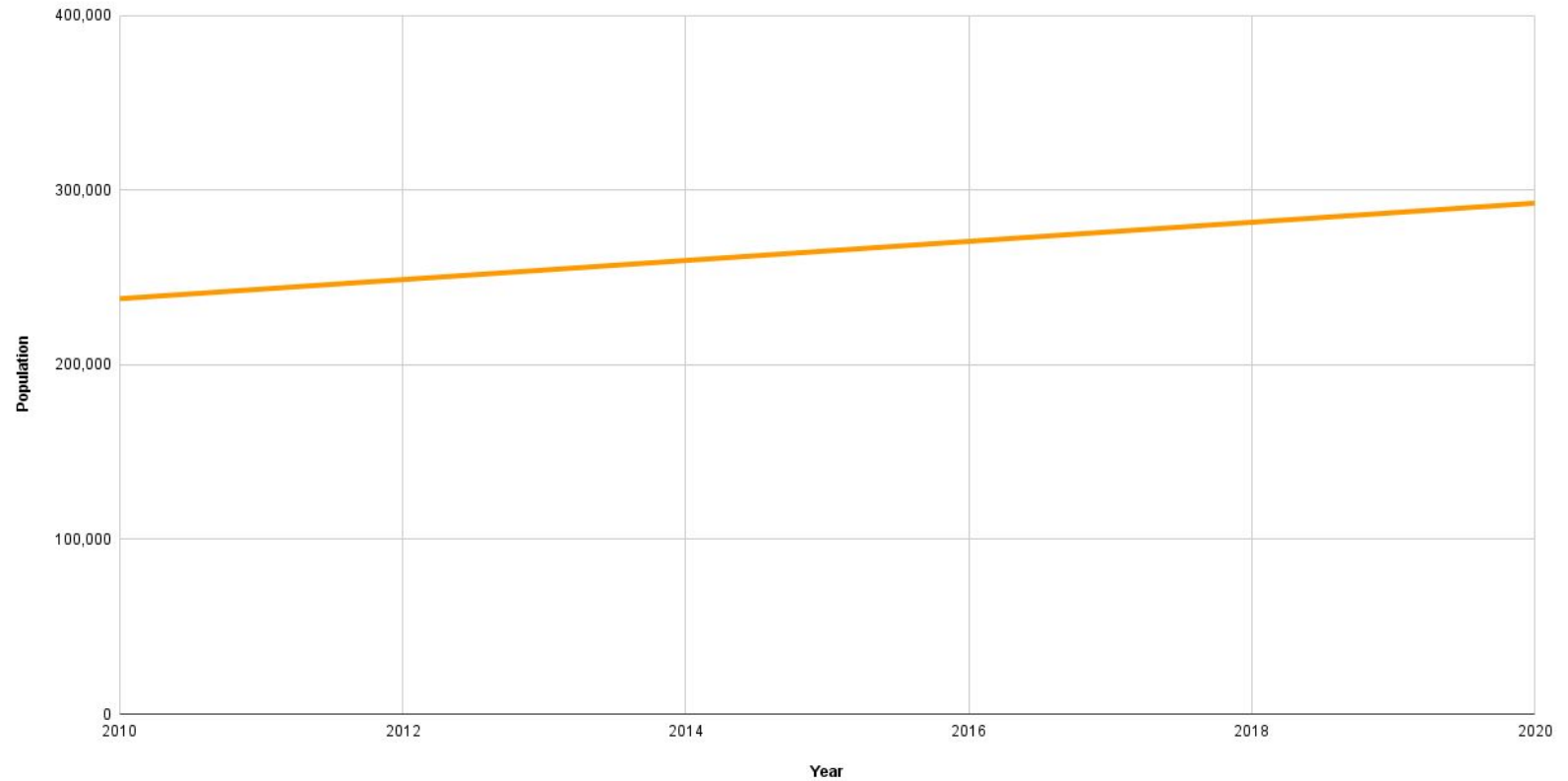


Jersey City Population Density

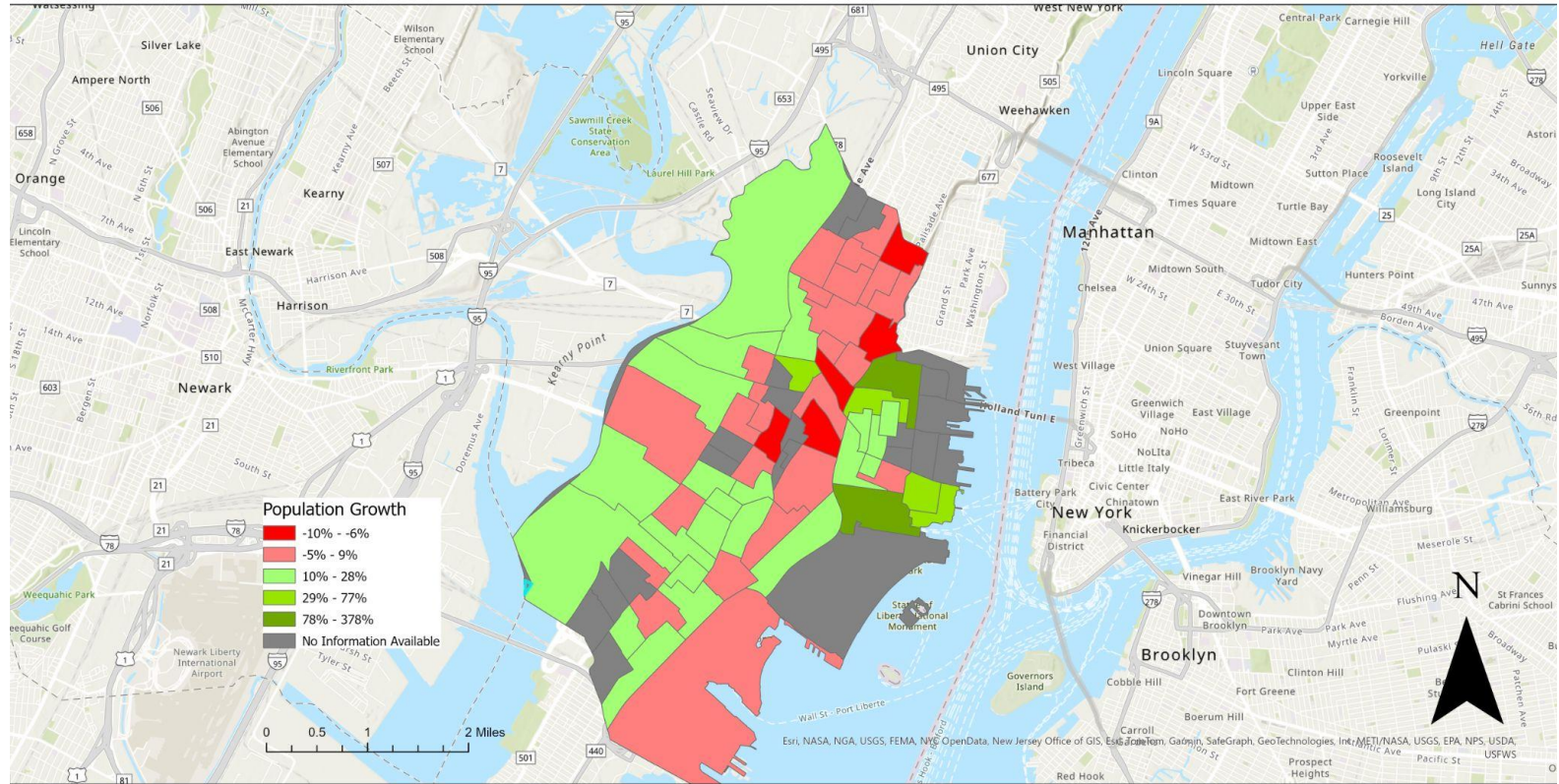


Jersey City's population has grown at a rapid pace

Jersey City added 54,683 people, or a 23% increase in population.

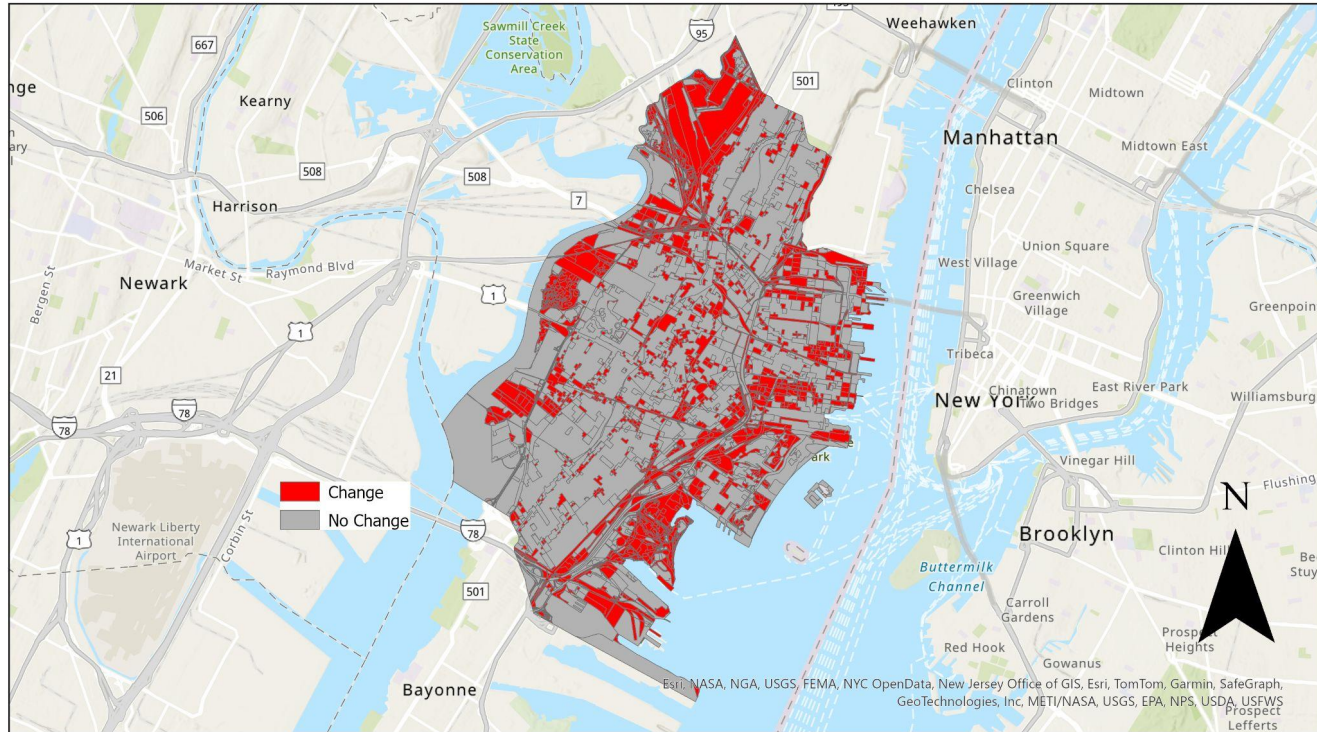


Percent Change Population Jersey City, 2010 - 2020

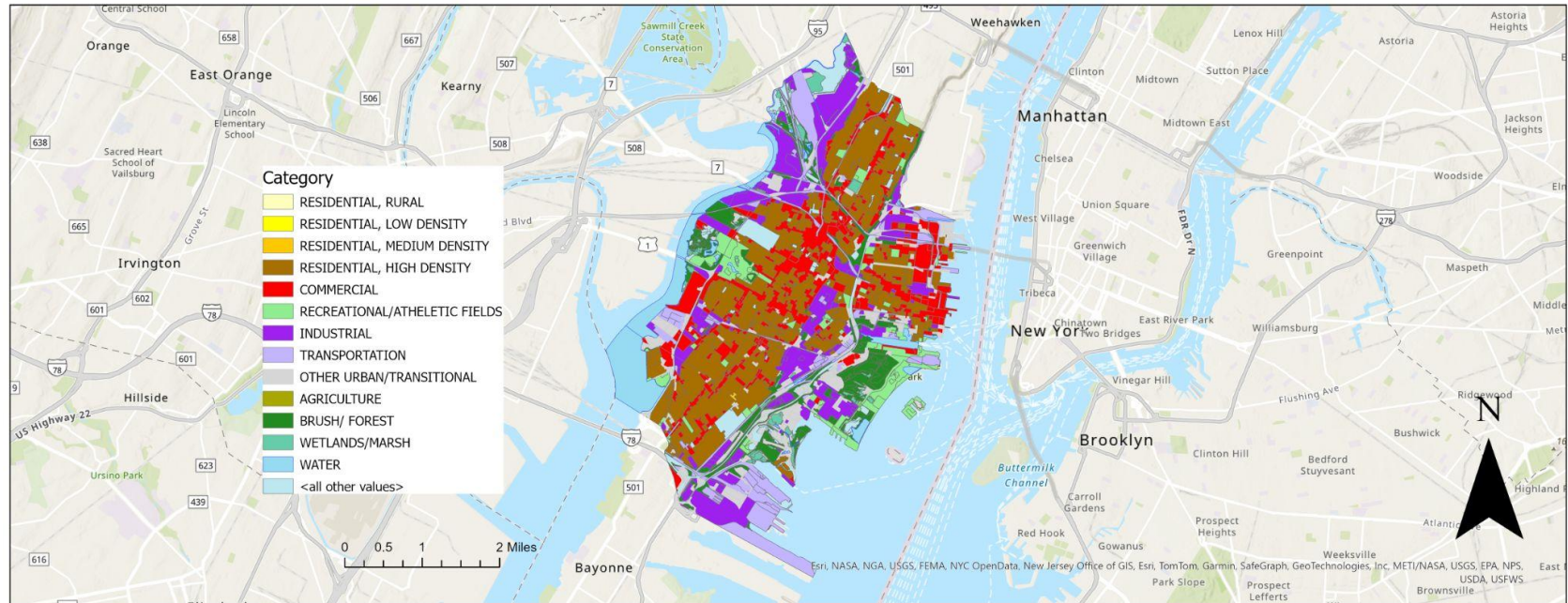


Jersey City Land Use Change, 2002-2020

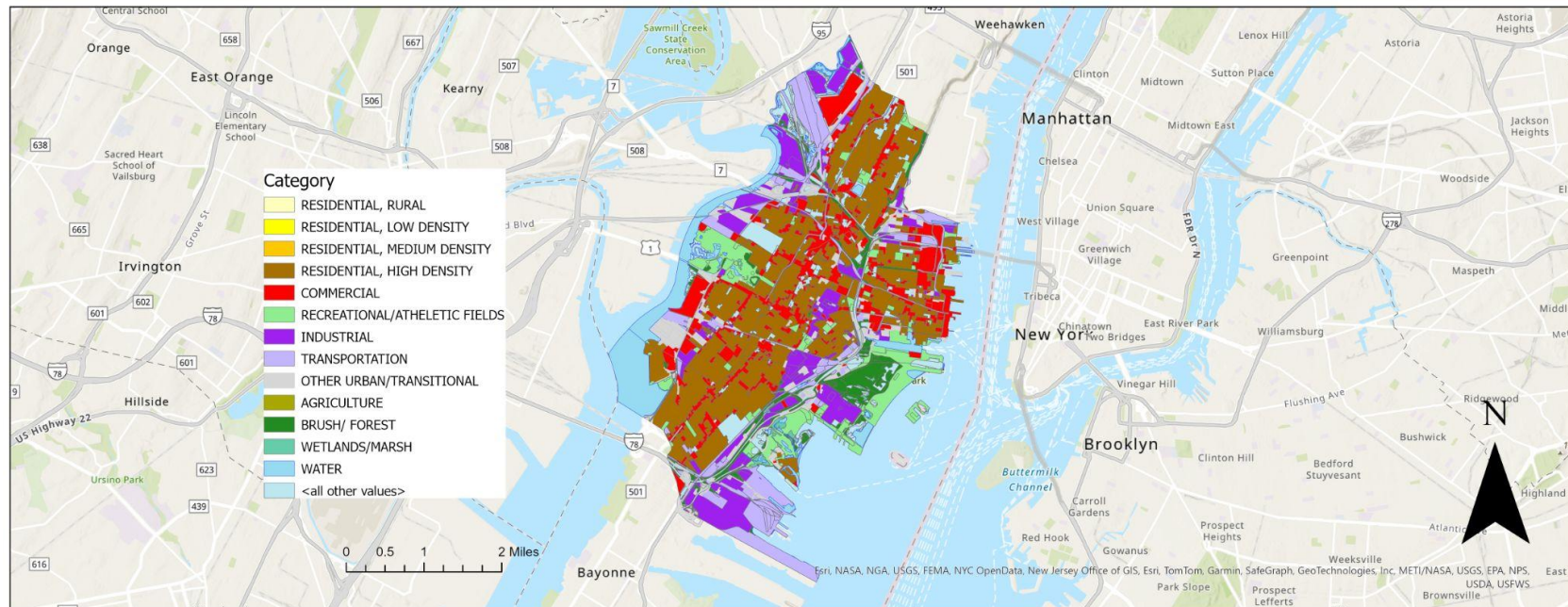
Land use in Jersey City has Changed dramatically over the past couple of decades.



2002 Land Use, Jersey City

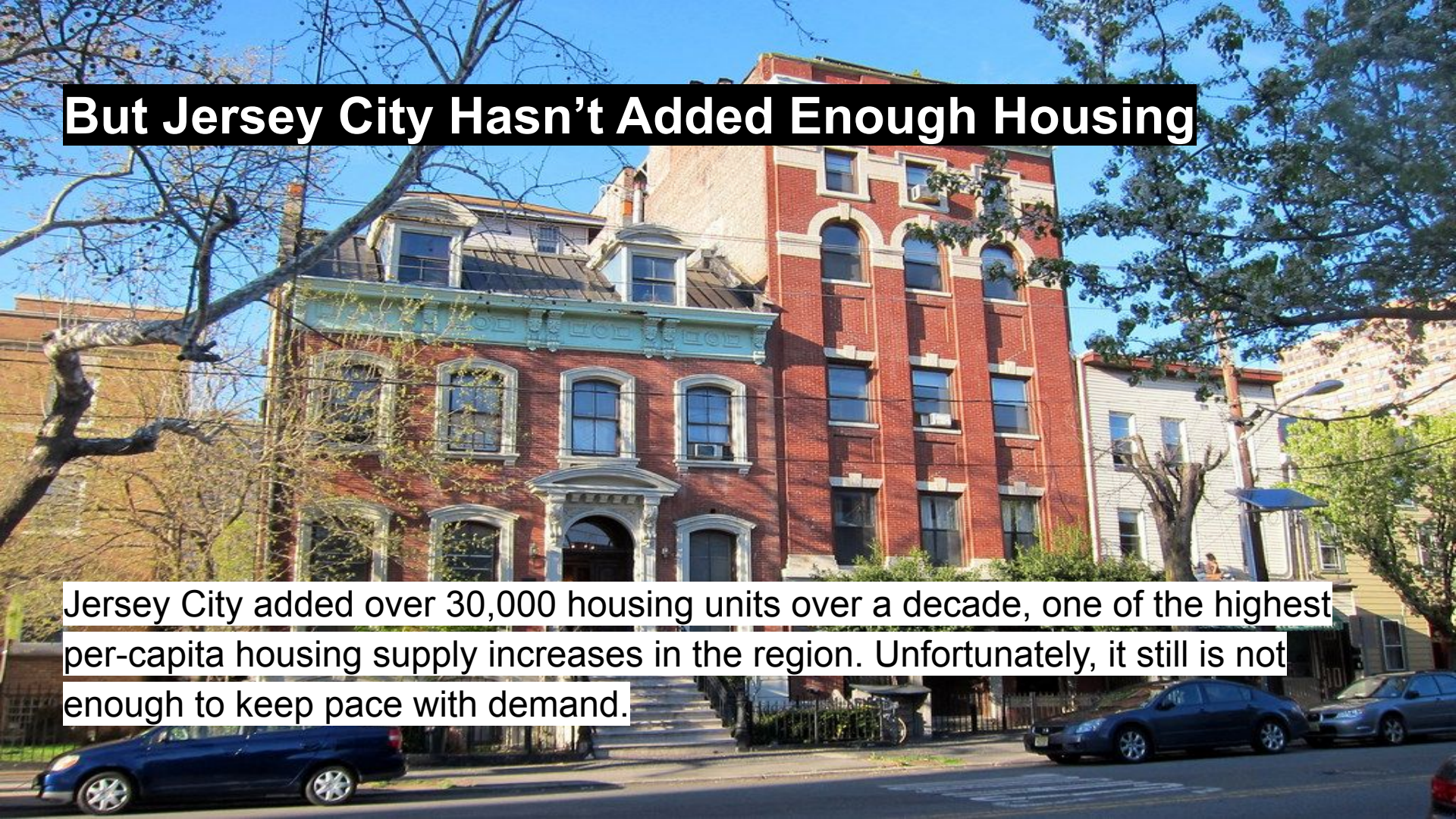


2020 Land Use, Jersey City



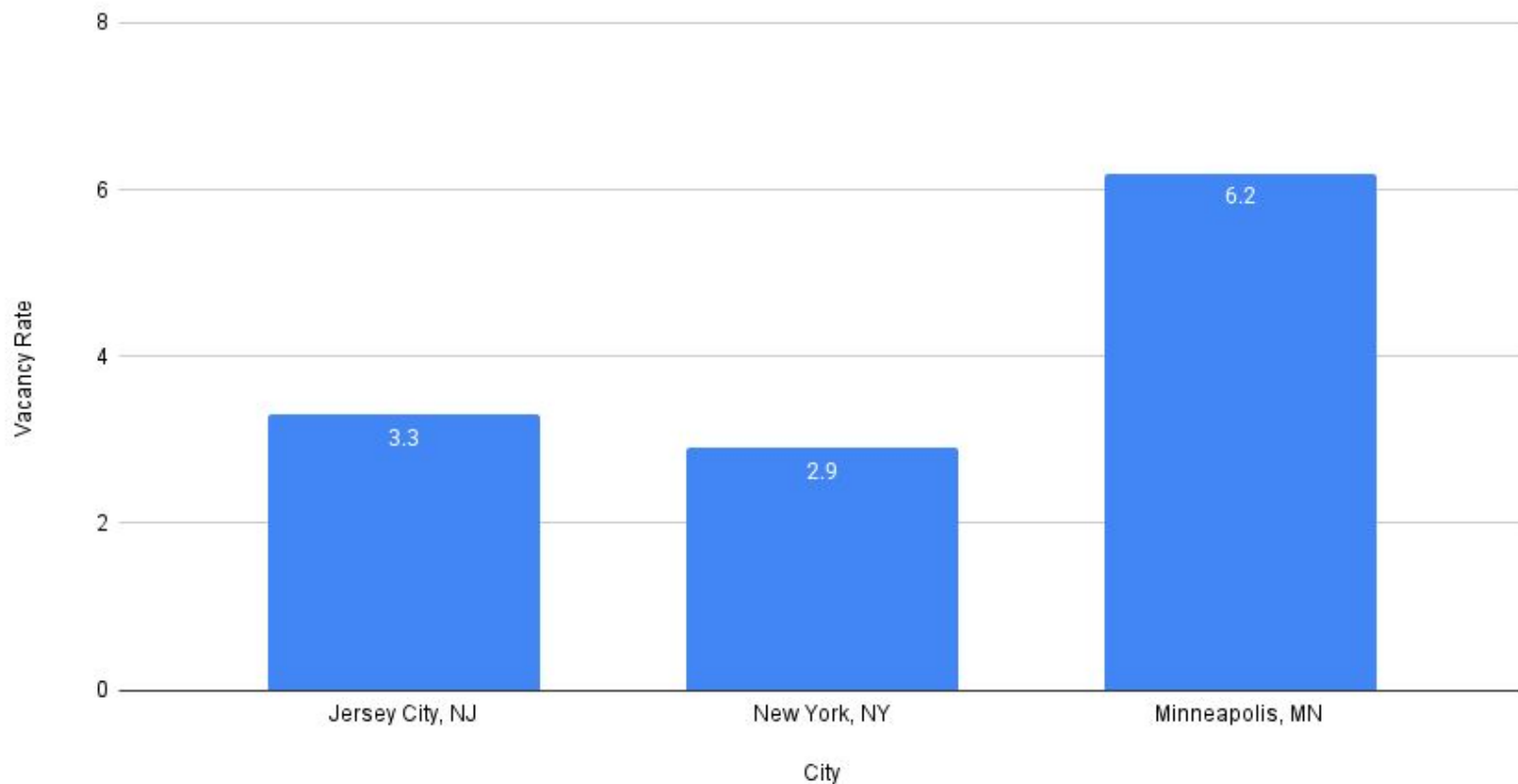
But Jersey City Hasn't Added Enough Housing

Jersey City added over 30,000 housing units over a decade, one of the highest per-capita housing supply increases in the region. Unfortunately, it still is not enough to keep pace with demand.



Rental Vacancy Rate 2023

Vacancy is very tight in the NY / NJ area.

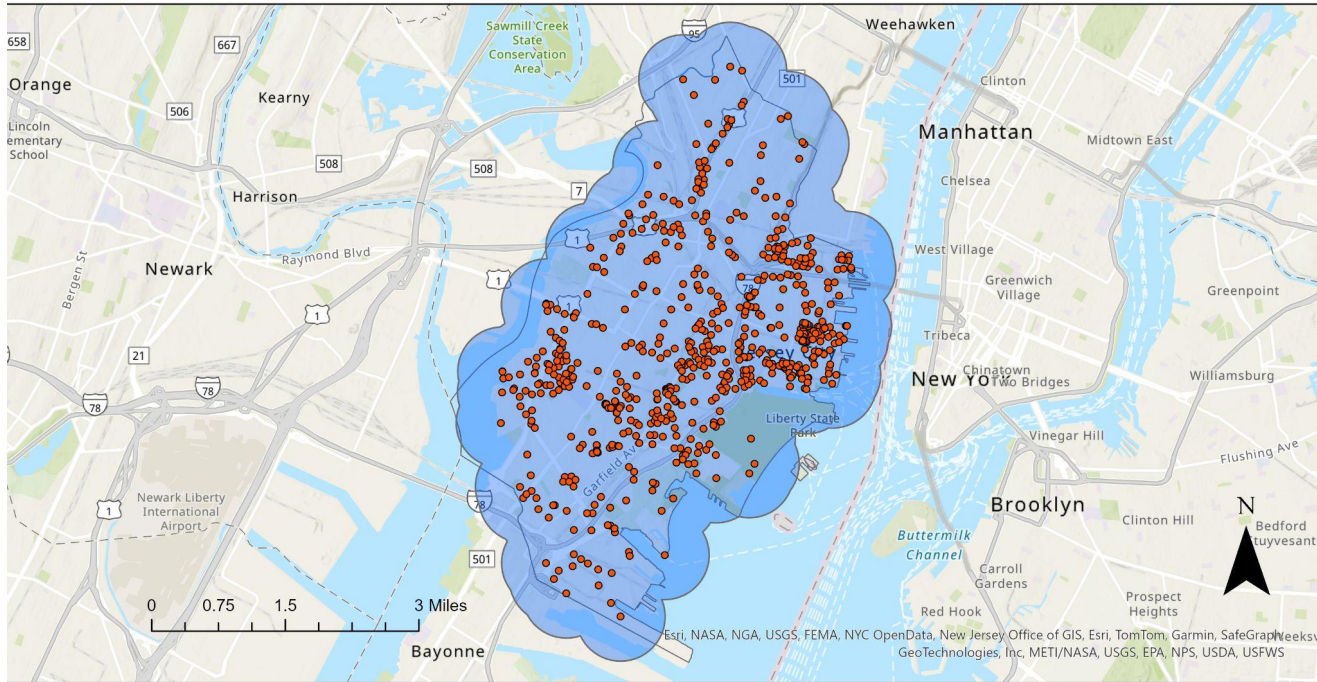




Jersey City needs at least 27,000 new homes to keep up with demand, according to the Regional Plan Association.

Where will these homes go?

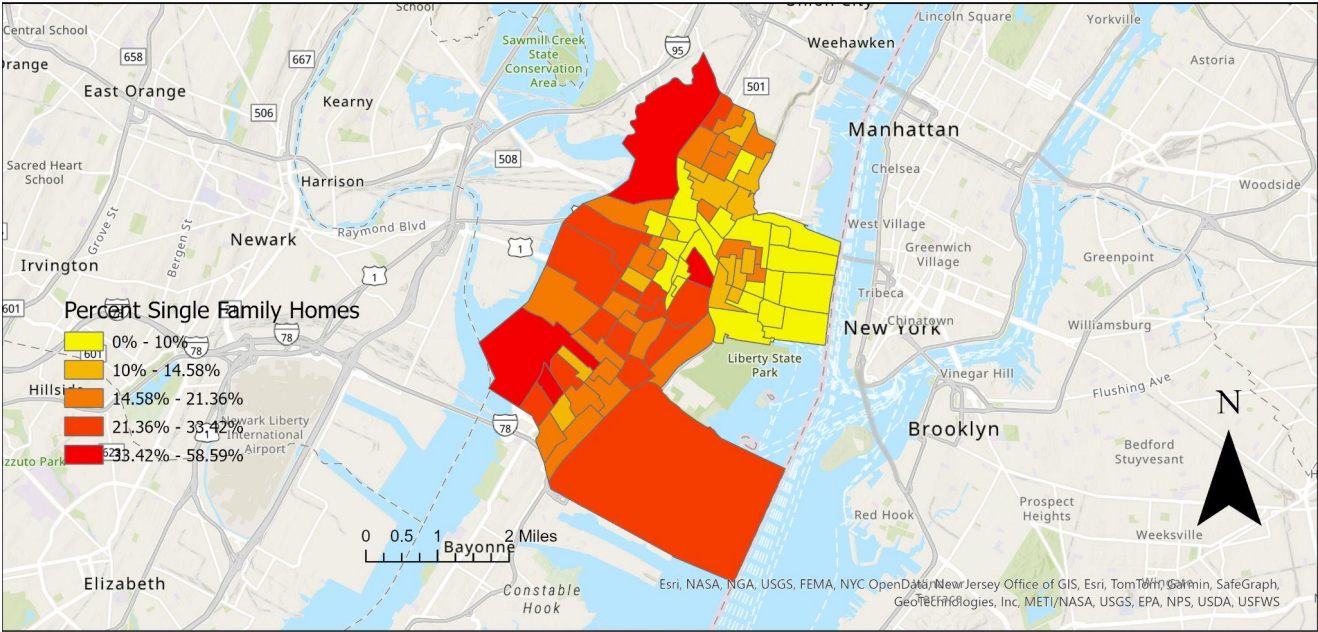
Jersey City's Contaminated Sites



These sites present opportunities for environmental remediation & redevelopment.

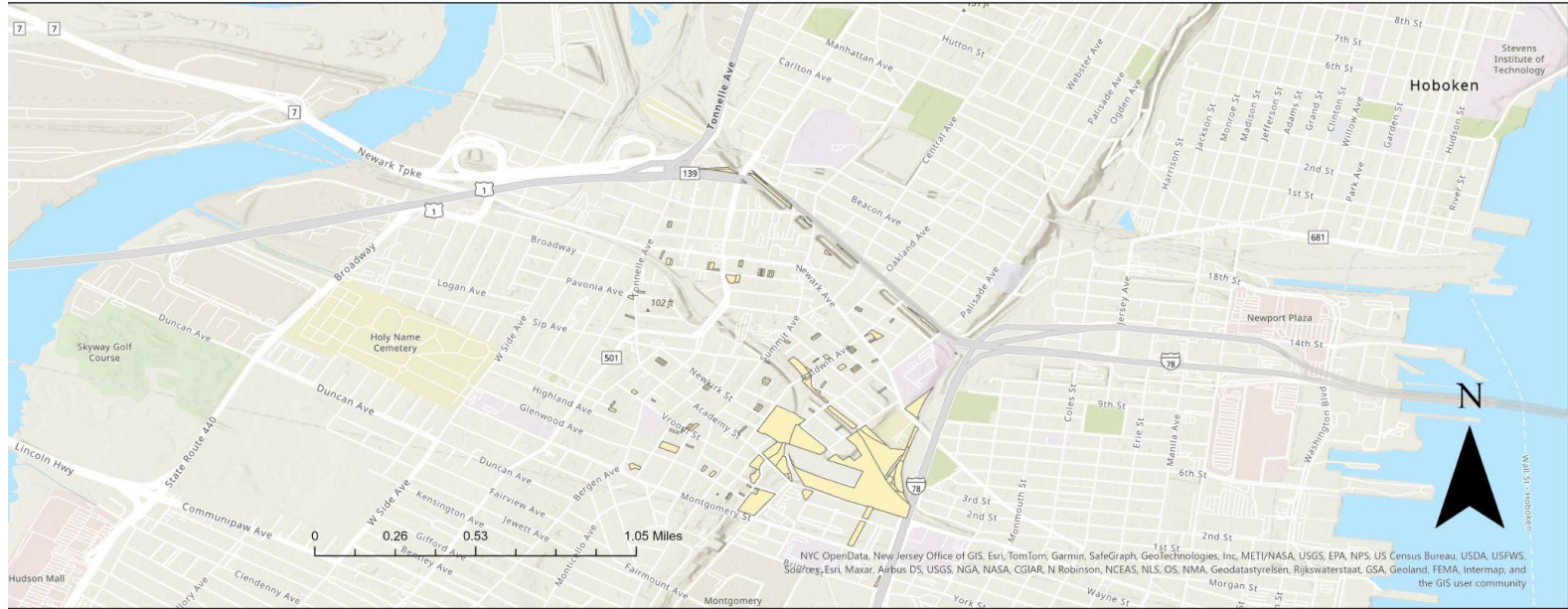
Percent Single Family Homes Jersey City

Single-Family neighborhoods present an opportunity to place new housing.

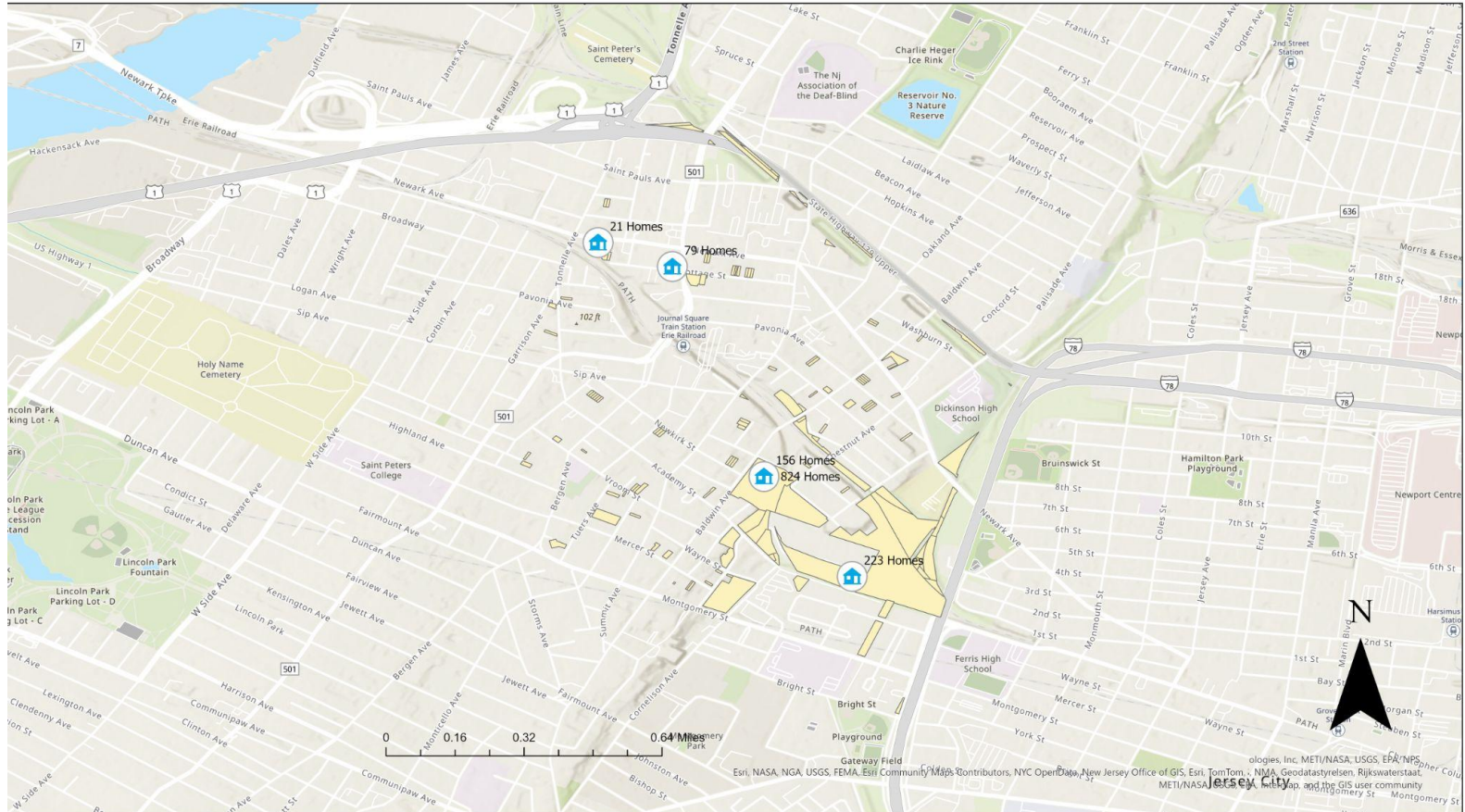


Vacant Land in Journal Square

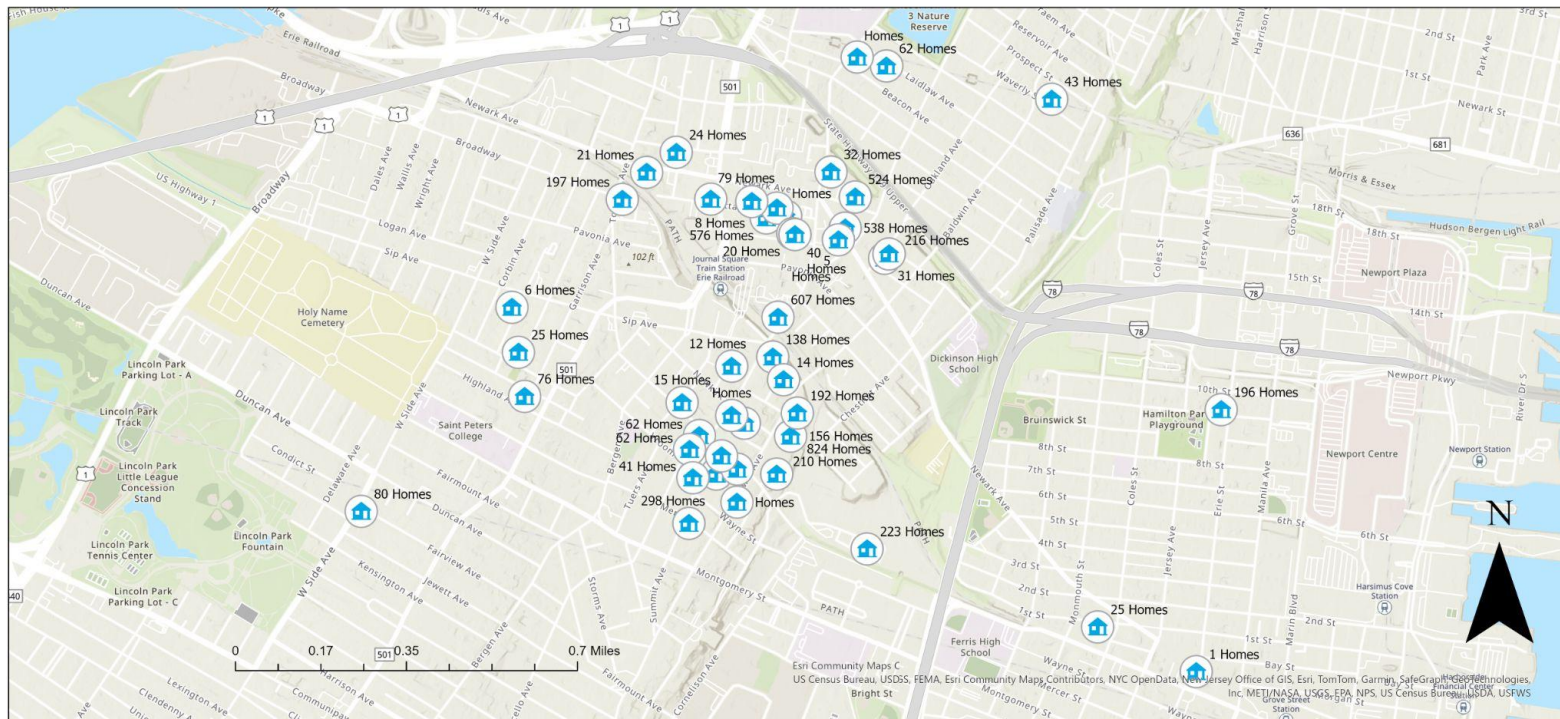
Or perhaps we could place new housing on vacant land.



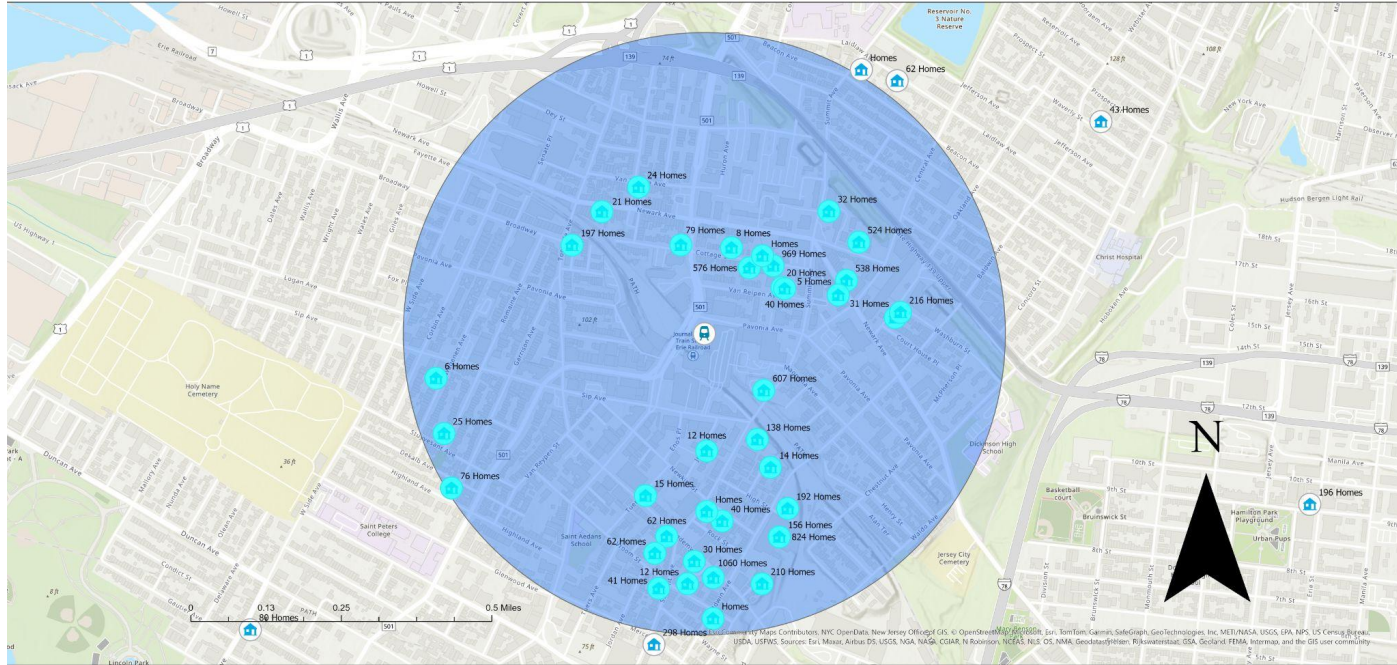
Good News: Jersey City is redeveloping some of its empty parcels!



Good news: Jersey City approved more than 15,000 units of housing in 2023 in Journal Square alone!



Most homes are within a half mile of the PATH station



Thank You!

Sources:

- US Census Data
- Regional Plan Association
- NJGIN
- City of Jersey City

